

Chapter 5

Anita and the Honey Bees

Page number: 39

Question 1. Find out how much money do you spend in one year for different school related things.

Answer: Things Money spent

1. Travel to school and back -	Rs. 700
2. Notebooks-	Rs. 900
3. Pens-Pencils/ Stationary-	Rs. 500
4. Uniforms -	Rs. 1600
5. School Bags -	Rs. 450
6. Lunch Box-	Rs. 250
7. Shoes-	Rs. 950
8. Other Things- (i) Fees	Rs.6500
(ii) Books	Rs. 1500
Total -	Rs. 13350

Page number: 40

Question 2. How much money did you spend on your books this year?

Answer: Around fifteen hundred.

Question 3. What kind of a school uniform would like to wear? Draw a picture in your notebook and color it.

Answer: draw your uniform and color it.

Question 4. Do you know someone who wanted to study, but could not do so?

Answer: Yes, in my neighborhood, a boy wanted to study. But, he had to leave after his father's death.

Page number: 41

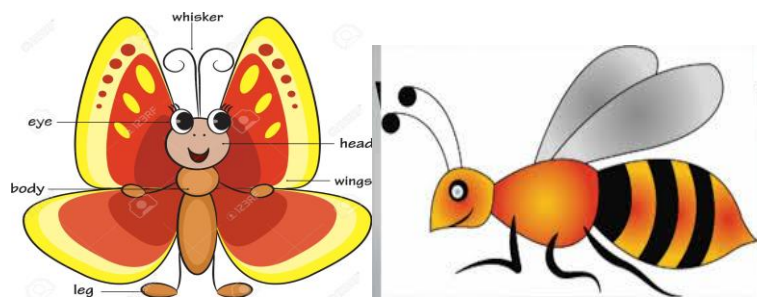
Question 5. Every child has a right to free education upto class VIII. Do you think that all children are able to study upto class VIII?

Answer: No, many children dropout due to various reasons.

Question 6. Have you seen any insects near flowers? Find out their names and write.

Answer: Yes, i have seen insects near flowers like honeybee and butterfly.

Question 7. Draw their picture in the notebook.



Answer :

Page number: 42

Question 8. Why do you think they come to the flowers? Find out.

Answer: They come to the flowers to collect nectar.

Question 9. When honeybees fly, there is a kind of sound. Can you try to copy this sound?

Answer: When honey bees fly they produce a buzzing sound.

Page number: 43

Question 10. What do people in your area put on the part of the body where the bee has stung?

Answer: They usually put Chuna or lime.

Question 11. Draw a picture of a honey bee. Color it, give it a name.

Ans: do it ownself

Question 12. What will be the total cost of Anita's 20 boxes?

Answer: The total cost of Anita's 20 boxes will be about Rs. 20,000.

Page number: 44

Question 13. Anita and others in her village get Rs. 35 for one kilogram of honey. How much does one kilogram of honey cost in your town?

Answer: One kilogram of honey costs Rs. 270/- Kg.

Question 14. What different colors of honey have you seen?

Answer: I have seen Golden and brown color honey.

Question 15. Is honey used in your house? For what is it used?

Answer: We take one spoon of honey every morning. It keeps us healthy. Also we eat it with bread

Page number: 45

Question 16. Which are some other insects that live together in a group like honeybees?

Answer: Other insects that live together in a group like honeybees are ants, termites, wasps.

Question 17. Have you seen where ants live?

Answer: They live inside soil.

Question 18. What kind of eatables attract ants? List them.

Answer: Grains, dead insects etc attract ants to them.

Question 19. Look at a line of ants. What is its colour?

Answer: They are black or red in color.

Page number: 46

Question 20. Have you been bitten by an ant? What was the ant like black or red big or small?

Answer:. Yes, I have been bitten by an ant. It was big and red in color.

Question 21. Do ants ever come near you? When?

Answer: They come near me when there is something eatable around me.

Question 22. Look carefully ant some big and small ants. How many legs does an ant have?

Answer: Big ants - 6

Small ants – 6

Question 23. Draw an ant in your notebook and colour it.



Answer: